

S  
A  
M  
P  
L  
E  
B  
A  
L  
L  
O  
T

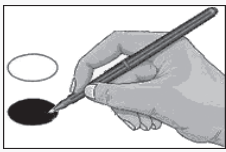
Sample Ballot  
Orange County, North Carolina  
November 3, 2020


PAID FOR BY THE ORANGE COUNTY DEMOCRATIC PARTY.  
NOT AUTHORIZED BY ANY CANDIDATE  
OR CANDIDATE'S COMMITTEE.

**B0002**  


**BALLOT MARKING INSTRUCTIONS:**

- A. With the marking device provided or a black ball point pen, completely fill in the oval to the left of each candidate or selection of your choice as shown.
- B. Where authorized, you may write in a candidate by filling in the oval and writing the name on the Write-in line.
- C. If you tear, deface or wrongly mark this ballot, return it to request a replacement.



FEDERAL OFFICES	STATE OFFICES	NC Commissioner of Insurance (You may vote for ONE)
<p><b>President and Vice President of the United States</b> (You may vote for ONE)</p> <p><input type="radio"/> Donald J. Trump Michael R. Pence Republican</p> <p><input checked="" type="radio"/> Joseph R. Biden Kamala D. Harris Democrat</p> <p><input type="radio"/> Don Blankenship William Mohr Constitution</p> <p><input type="radio"/> Howie Hawkins Angela Walker Green</p> <p><input type="radio"/> Jo Jorgensen Jeremy (Spike) Cohen Libertarian</p> <p><input type="radio"/> Write-in</p>	<p><b>NC Governor</b> (You may vote for ONE)</p> <p><input type="radio"/> Al Pisano Constitution</p> <p><input checked="" type="radio"/> Roy Cooper Democrat</p> <p><input type="radio"/> Steven J. DiFiore Libertarian</p> <p><input type="radio"/> Dan Forest Republican</p>	<p><input type="radio"/> Mike Causey Republican</p> <p><input checked="" type="radio"/> Wayne Goodwin Democrat</p>
<p><b>US Senate</b> (You may vote for ONE)</p> <p><input type="radio"/> Thom Tillis Republican</p> <p><input type="radio"/> Shannon W. Bray Libertarian</p> <p><input checked="" type="radio"/> Cal Cunningham Democrat</p> <p><input type="radio"/> Kevin E. Hayes Constitution</p>	<p><b>NC Lieutenant Governor</b> (You may vote for ONE)</p> <p><input type="radio"/> Mark Robinson Republican</p> <p><input checked="" type="radio"/> Yvonne Lewis Holley Democrat</p>	<p><b>NC Commissioner of Labor</b> (You may vote for ONE)</p> <p><input type="radio"/> Josh Dobson Republican</p> <p><input checked="" type="radio"/> Jessica Holmes Democrat</p>
<p><b>US House of Representatives District 4</b> (You may vote for ONE)</p> <p><input checked="" type="radio"/> David E. Price Democrat</p> <p><input type="radio"/> Robert Thomas Republican</p>	<p><b>NC Attorney General</b> (You may vote for ONE)</p> <p><input type="radio"/> Jim O'Neill Republican</p> <p><input checked="" type="radio"/> Josh Stein Democrat</p>	<p><b>NC Secretary of State</b> (You may vote for ONE)</p> <p><input type="radio"/> E.C. Sykes Republican</p> <p><input checked="" type="radio"/> Elaine Marshall Democrat</p>
	<p><b>NC Auditor</b> (You may vote for ONE)</p> <p><input type="radio"/> Anthony Wayne (Tony) Street Republican</p> <p><input checked="" type="radio"/> Beth A. Wood Democrat</p>	<p><b>NC Superintendent of Public Instruction</b> (You may vote for ONE)</p> <p><input type="radio"/> Catherine Truitt Republican</p> <p><input checked="" type="radio"/> Jen Mangrum Democrat</p>
	<p><b>NC Commissioner of Agriculture</b> (You may vote for ONE)</p> <p><input type="radio"/> Steve Troxler Republican</p> <p><input checked="" type="radio"/> Jenna Wadsworth Democrat</p>	<p><b>NC Treasurer</b> (You may vote for ONE)</p> <p><input checked="" type="radio"/> Ronnie Chatterji Democrat</p> <p><input type="radio"/> Dale R. Folwell Republican</p>
		<p><b>NC Supreme Court Chief Justice Seat 1</b> (You may vote for ONE)</p> <p><input checked="" type="radio"/> Cheri Beasley Democrat</p> <p><input type="radio"/> Paul Newby Republican</p>
		<p>Continue voting next side </p>

D		E		F	
		<b>-- VOTE BOTH SIDES --</b>			
<b>NC Supreme Court Associate Justice Seat 2</b> (You may vote for ONE)		<b>NC State Senate District 23</b> (You may vote for ONE)		<b>Board of Commissioners District 1</b> (You may vote for TWO)	
<input type="radio"/> <b>Phil Berger, Jr.</b> Republican <input checked="" type="radio"/> <b>Lucy Inman</b> Democrat		<input checked="" type="radio"/> <b>Valerie P. Foushee</b> Democrat <input type="radio"/> <b>Tom Glendinning</b> Republican		<input checked="" type="radio"/> <b>Mark Dorosin</b> Democrat <input checked="" type="radio"/> <b>Jean Hamilton</b> Democrat	
<b>NC Supreme Court Associate Justice Seat 4</b> (You may vote for ONE)		<b>NC House of Representatives District 56</b> (You may vote for ONE)		<b>Board of Commissioners District 2</b> (You may vote for ONE)	
<input type="radio"/> <b>Tamara Barringer</b> Republican <input checked="" type="radio"/> <b>Mark Davis</b> Democrat		<input checked="" type="radio"/> <b>Verla C. Insko</b> Democrat		<input checked="" type="radio"/> <b>Renee Price</b> Democrat	
		<b>DISTRICT OFFICES</b>		<b>NONPARTISAN OFFICES</b>	
<b>NC Court of Appeals Judge Seat 4</b> (You may vote for ONE)		<b>NC District Court Judge District 15B Seat 2</b> (You may vote for ONE)		<b>Soil and Water Conservation District Supervisor</b> (You may vote for ONE)	
<input checked="" type="radio"/> <b>Tricia Shields</b> Democrat <input type="radio"/> <b>April C. Wood</b> Republican		<input checked="" type="radio"/> <b>Samantha H. Cabe</b> Democrat		<input checked="" type="radio"/> <b>Gail M. Hughes</b>  <input type="radio"/> Write-in _____	
<b>NC Court of Appeals Judge Seat 5</b> (You may vote for ONE)		<b>NC District Court Judge District 15B Seat 3</b> (You may vote for ONE)		<b>End of Ballot</b>	
<input checked="" type="radio"/> <b>Lora Christine Cabbage</b> Democrat <input type="radio"/> <b>Fred Gore</b> Republican		<input checked="" type="radio"/> <b>Hathaway Pendergrass</b> Democrat			
<b>NC Court of Appeals Judge Seat 6</b> (You may vote for ONE)		<b>NC District Court Judge District 15B Seat 4</b> (You may vote for ONE)			
<input checked="" type="radio"/> <b>Gray Styers</b> Democrat <input type="radio"/> <b>Chris Dillon</b> Republican		<input checked="" type="radio"/> <b>Sherri Murrell</b> Democrat			
<input checked="" type="radio"/> <b>Reuben F. Young</b> Democrat <input type="radio"/> <b>Jeff Carpenter</b> Republican		<b>NC District Court Judge District 15B Seat 5</b> (You may vote for ONE)			
<b>NC Court of Appeals Judge Seat 7</b> (You may vote for ONE)		<input checked="" type="radio"/> <b>Beverly A. Scarlett</b> Democrat		<div style="border: 1px solid black; padding: 5px;"> <b>PAID FOR BY THE ORANGE COUNTY DEMOCRATIC PARTY. NOT AUTHORIZED BY ANY CANDIDATE OR CANDIDATE'S COMMITTEE.</b> </div>	
<input checked="" type="radio"/> <b>Reuben F. Young</b> Democrat <input type="radio"/> <b>Jeff Carpenter</b> Republican		<b>COUNTY OFFICES</b>			
<b>NC Court of Appeals Judge Seat 13</b> (You may vote for ONE)		<b>Board of Commissioners At-Large</b> (You may vote for ONE)			
<input checked="" type="radio"/> <b>Chris Brook</b> Democrat <input type="radio"/> <b>Jefferson G. Griffin</b> Republican		<input checked="" type="radio"/> <b>Amy Fowler</b> Democrat			
		North Carolina		Ballot Style B0002	

S  
A  
M  
P  
L  
E  
  
B  
A  
L  
L  
O  
T