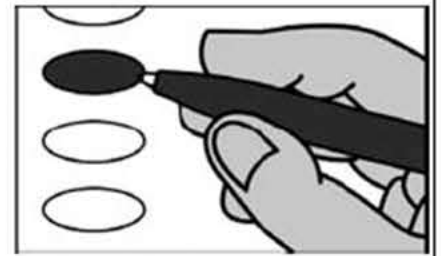


Sample Ballot
 Orange County, North Carolina
 November 5, 2024

B0002


BALLOT MARKING INSTRUCTIONS:

- A. With the marking device provided or a black ball point pen, completely fill in the oval to the left of each candidate or selection of your choice as shown.
- B. Where authorized, you may write in a candidate by filling in the oval and writing the name on the Write-in line.
- C. If you tear, deface or wrongly mark this ballot, return it to request a replacement.



PARTISAN ELECTIONS		
	NC Auditor (You may vote for ONE)	NC Court of Appeals Judge Seat 15 (You may vote for ONE)
President and Vice President of the United States (You may vote for ONE)	<input type="radio"/> Bob Drach <i>Libertarian Party</i> <input checked="" type="radio"/> Jessica Holmes <i>Democratic Party</i> <input type="radio"/> Dave Boliek <i>Republican Party</i>	<input type="radio"/> Chris Freeman <i>Republican Party</i> <input checked="" type="radio"/> Martin E. Moore <i>Democratic Party</i>
<input checked="" type="radio"/> Kamala D. Harris Tim Walz <i>Democratic Party</i> <input type="radio"/> Chase Oliver Mike ter Maat <i>Libertarian Party</i> <input type="radio"/> Jill Stein Rudolph Ware <i>Green Party</i> <input type="radio"/> Randall Terry Stephen E. Broden <i>Constitution Party</i> <input type="radio"/> Donald J. Trump JD Vance <i>Republican Party</i> <input type="radio"/> Cornel West Melina Abdullah <i>Justice for All Party</i> Write-in -----	NC Commissioner of Agriculture (You may vote for ONE)	NC State Senate District 23 (You may vote for ONE)
	<input type="radio"/> Sean Haugh <i>Libertarian Party</i> <input checked="" type="radio"/> Sarah Taber <i>Democratic Party</i> <input type="radio"/> Steve Troxler <i>Republican Party</i>	<input checked="" type="radio"/> Graig R. Meyer <i>Democratic Party</i> <input type="radio"/> Laura Pichardo <i>Republican Party</i>
	NC Commissioner of Insurance (You may vote for ONE)	NC House of Representatives District 56 (You may vote for ONE)
	<input checked="" type="radio"/> Natasha Marcus <i>Democratic Party</i> <input type="radio"/> Mike Causey <i>Republican Party</i>	<input type="radio"/> Jeffrey Hoagland <i>Republican Party</i> <input checked="" type="radio"/> Allen Buansi <i>Democratic Party</i>
	NC Commissioner of Labor (You may vote for ONE)	NC District Court Judge District 18 Seat 2 (You may vote for ONE)
	<input type="radio"/> Luke Farley <i>Republican Party</i> <input checked="" type="radio"/> Braxton Winston II <i>Democratic Party</i>	<input checked="" type="radio"/> Samantha Cabe <i>Democratic Party</i> NC District Court Judge District 18 Seat 3 (You may vote for ONE)
US House of Representatives District 4 (You may vote for ONE)	NC Secretary of State (You may vote for ONE)	NC District Court Judge District 18 Seat 4 (You may vote for ONE)
<input checked="" type="radio"/> Valerie P. Foushee <i>Democratic Party</i> <input type="radio"/> Guy Meilleur <i>Libertarian Party</i> <input type="radio"/> Eric Blankenburg <i>Republican Party</i>	<input checked="" type="radio"/> Elaine Marshall <i>Democratic Party</i> <input type="radio"/> Chad Brown <i>Republican Party</i>	<input checked="" type="radio"/> Sherri Murrell <i>Democratic Party</i> NC District Court Judge District 18 Seat 5 (You may vote for ONE)
NC Governor (You may vote for ONE)	NC Superintendent of Public Instruction (You may vote for ONE)	<input checked="" type="radio"/> Joal Hall Broun <i>Democratic Party</i>
<input type="radio"/> Mark Robinson <i>Republican Party</i> <input type="radio"/> Mike Ross <i>Libertarian Party</i> <input type="radio"/> Vinny Smith <i>Constitution Party</i> <input checked="" type="radio"/> Josh Stein <i>Democratic Party</i> <input type="radio"/> Wayne Turner <i>Green Party</i>	<input checked="" type="radio"/> Maurice (Mo) Green <i>Democratic Party</i> <input type="radio"/> Michele Morrow <i>Republican Party</i>	Orange County Board of Commissioners At-Large (You may vote for ONE)
	NC Treasurer (You may vote for ONE)	<input checked="" type="radio"/> Amy Fowler <i>Democratic Party</i>
	<input checked="" type="radio"/> Wesley Harris <i>Democratic Party</i> <input type="radio"/> Brad Briner <i>Republican Party</i>	Orange County Board of Commissioners District 1 (You may vote for TWO)
NC Lieutenant Governor (You may vote for ONE)	NC Supreme Court Associate Justice Seat 6 (You may vote for ONE)	<input checked="" type="radio"/> Jean Hamilton <i>Democratic Party</i> <input checked="" type="radio"/> Marilyn Carter <i>Democratic Party</i>
<input checked="" type="radio"/> Rachel Hunt <i>Democratic Party</i> <input type="radio"/> Wayne Jones <i>Constitution Party</i> <input type="radio"/> Hal Weatherman <i>Republican Party</i> <input type="radio"/> Shannon W. Bray <i>Libertarian Party</i>	<input type="radio"/> Jefferson G. Griffin <i>Republican Party</i> <input checked="" type="radio"/> Allison Riggs <i>Democratic Party</i>	Orange County Board of Commissioners District 2 (You may vote for ONE)
	NC Court of Appeals Judge Seat 12 (You may vote for ONE)	<input checked="" type="radio"/> Phyllis Portie-Ascott <i>Democratic Party</i> <input type="radio"/> H. Nathan Robinson <i>Republican Party</i>
		NONPARTISAN ELECTIONS
NC Attorney General (You may vote for ONE)	<input type="radio"/> Tom Murry <i>Republican Party</i> <input checked="" type="radio"/> Carolyn Jennings Thompson <i>Democratic Party</i>	Orange County Soil and Water Conservation District Supervisor (You may vote for ONE)
<input checked="" type="radio"/> Jeff Jackson <i>Democratic Party</i> <input type="radio"/> Dan Bishop <i>Republican Party</i>	NC Court of Appeals Judge Seat 14 (You may vote for ONE)	<input checked="" type="radio"/> Gail McKee Hughes Write-in -----
	<input checked="" type="radio"/> Ed Eldred <i>Democratic Party</i> <input type="radio"/> Valerie Zachary <i>Republican Party</i>	
<div style="border: 1px solid orange; padding: 5px; background-color: #fff9c4;"> Paid for by the Orange County Democratic Party. Not authorized by any candidate or candidate's committee. </div>		Continue voting next side

S
A
M
P
L
E
B
A
L
L
O
T

